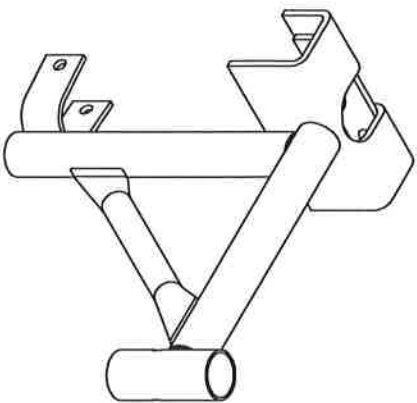
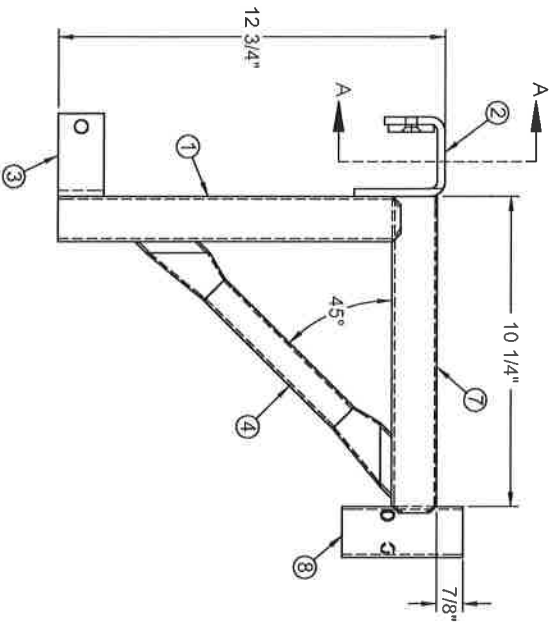
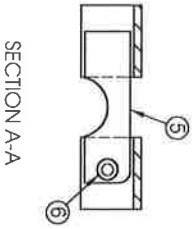
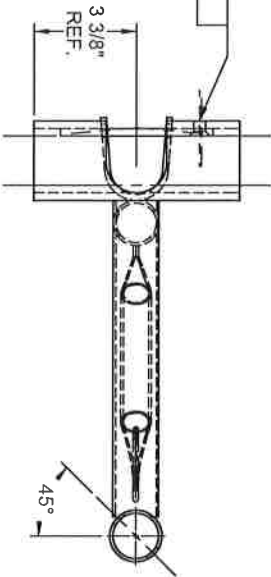


NOTE: HINGE PLATE MUST BE ABLE TO MOVE FREELY.

FULLY WELD
RIVET END
TO BRACKET



PRINT APPROVAL
 COMPANY _____
 SIGNATURE _____
 DATE _____

NO	QTY	DESCRIPTION	PART NO.
8	1	SOCKET 1.69"	0065-0561
7	1	1-1/2" x .083 x RND NOTCHED TUBE	0065-0729-03
6	1	Rivet-Countersunk Head-3/8 X 1/2	0090-0715
5	1	HINGE PLATE END SIDE BRACKET	0064-0082
4	1	TUBE-RND-01.000" X .083" X 12"	0065-0072-12
3	1	SADDLE	0064-0009
2	1	HANGER END SIDE BRACKET	0064-0073
1	1	TUBE-RND-01.500 X .083 NOTCHED	0065-0435-08

10" END BRACKET w/1.69" SOCKET

REV	BY	DATE	SCALE	WGT	FINISH
0			1:4	491 lbs	POWDER YELLOW

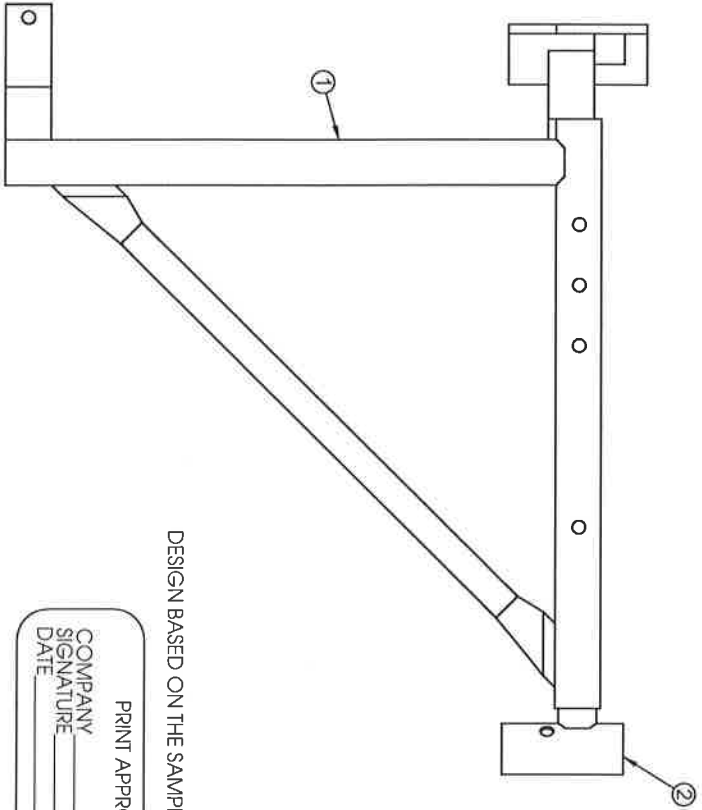
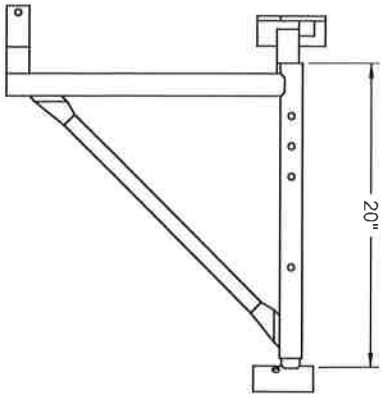
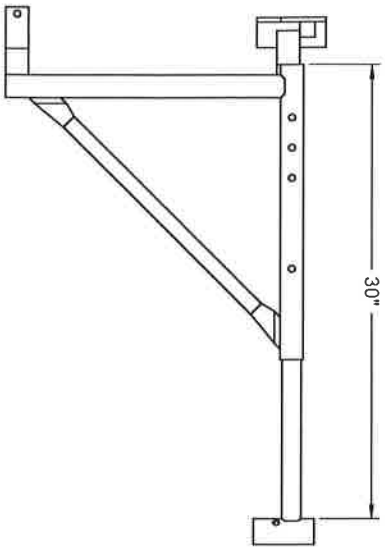
UNLESS OTHERWISE SPECIFIED
 THE FOLLOWING APPLY:
 DIMENSIONS ARE IN INCHES
 TOLERANCES ARE AS FOLLOWS
 FRACTION DECIMALS ANGLES
 XX# .01 .005 +.712
 XXX# .005 +.712

DR	RFO	DATE	DWG NO
BY		4-1-13	0039-202-745




This drawing is the property of Biljax, Inc., Ashland, Ohio. This equipment was designed with the understanding that the prints are loaned and will not be reproduced, copied, or used to assist in making further drawings, apparatus or parts thereof, and is to be returned unless otherwise specified.

ALL WELDS ARE TO BE CONTINUOUS
 AND WELDS ARE TO COMPLETELY FOLLOW THE JOINT
 CREATED BY THE MATING SURFACES
 OF PARTS JOINED



DESIGN BASED ON THE SAMPLE RECEIVED BY CUSTOMER

PRINT APPROVAL
 COMPANY _____
 SIGNATURE _____
 DATE _____

3 INSTALL # 3 BEFORE FINAL ASSEMBLY

NO.	QTY	DESCRIPTION	PART NUMBER
3	1	SPRING RIVET	0068-23
2	1	SLIDE TUBE W/ # 7 SOCKET	0039-200-745
1	1	FRAME WELDMENT	0039-199

REVISION	E.C.O.'S	WEIGHT	MATERIAL SPECIFICATION
0		11.23 lbs.	
REV BY	REV DATE	SCALE	1:4

FINISH: POWDER YELLOW
 UNLESS OTHERWISE SPECIFIED
 DIMENSIONS ARE IN INCHES.
 TOLERANCES ARE AS FOLLOWS
 FRACTION DECIMALS ANGLES
 XX 4/105 4/12
 ALL WELDS ARE TO BE CONTINUOUS
 3/16" FILLERS
 WELDS ARE TO
 COMPLETELY FOLLOW THE JOINT
 CREATED BY THE MATING SURFACES
 OF PARTS JOINED.

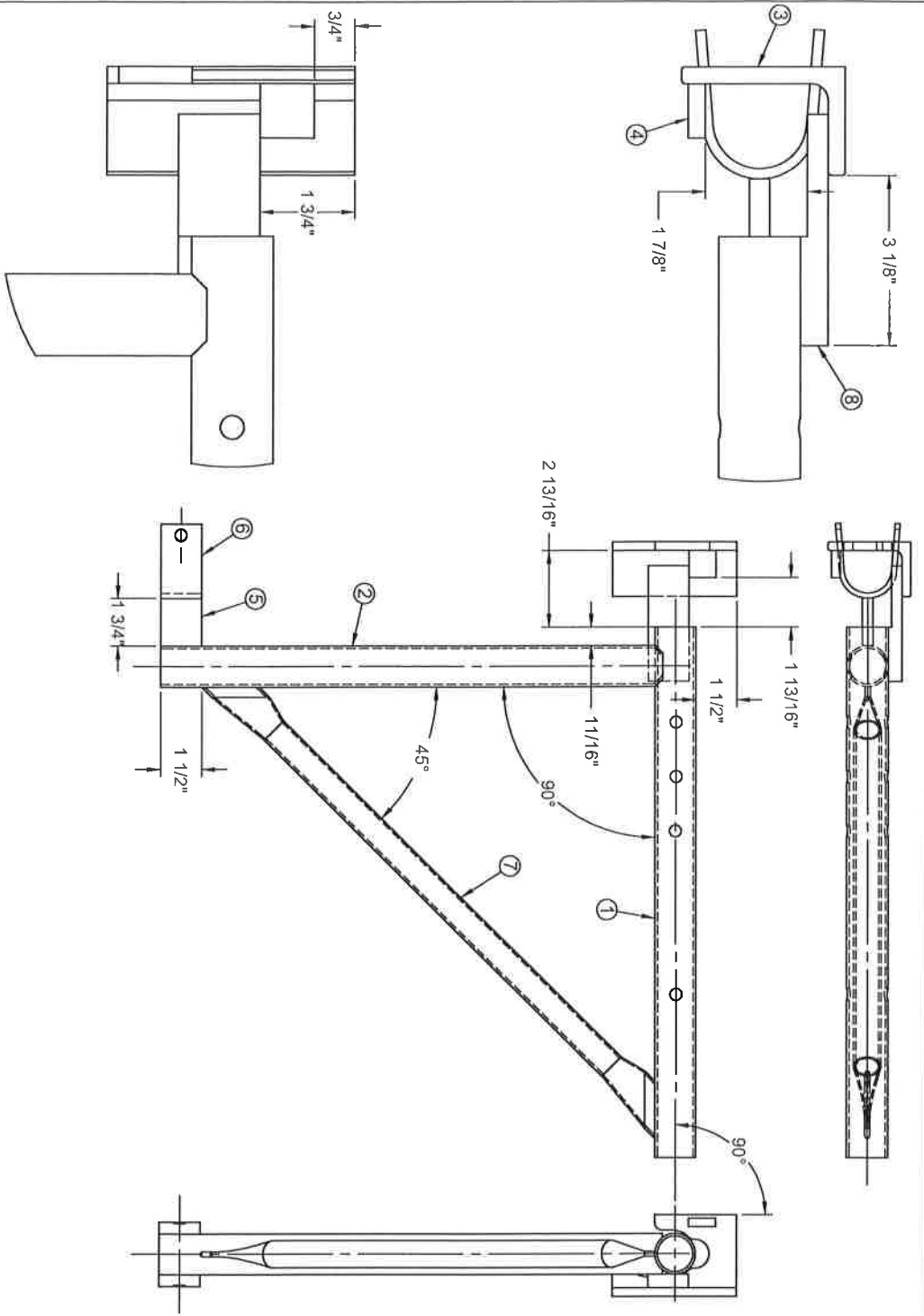
20" TO 30" NINE ADJUSTABLE
 SIDE BRACKET

DR BY RFO DATE 3-25-13 DWG NO. 0039-201-745

Haulotte GROUP | **BILJAX** ARCHBOLD, OHIO 43927 COPYRIGHT © 2009

SIZE **B**

This drawing is the property of Biljax, Inc., Archbold, Ohio. This equipment was designed with the understanding that the prints are loaned and will not be reproduced, copied, or used to assist in making further drawings, apparatus or parts thereof, and is to be returned unless otherwise specified.



REVISION	E.C.O.'S	WEIGHT	MATERIAL SPECIFICATION
0		8.95 lbs.	
REV BY	DATE	SCALE	1:1

FINISH: POWDER YELLOW
 UNLESS OTHERWISE SPECIFIED THE FOLLOWING APPLY:
 DIMENSIONS ARE IN INCHES
 TOLERANCES ARE AS FOLLOWS
 FRACTION DECIMALS ANGLES
 ±.0005 ±.005 ±.0125
 ALL WELDS ARE TO BE CONTINUOUS
 ALL WELD JOINTS ARE TO BE COMPLETELY FULFILLING THE JOINT REQUIREMENTS AS SHOWN ON THE DRAWING
 OR PARTS JOINED

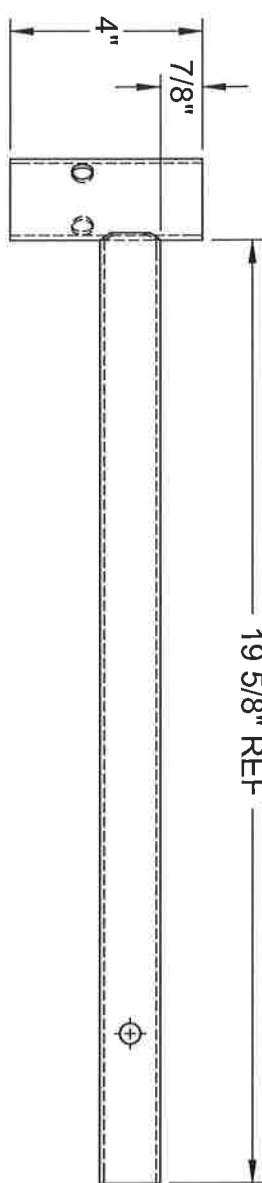
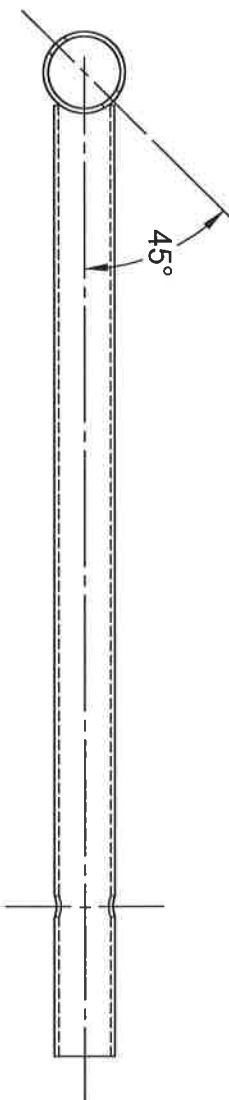
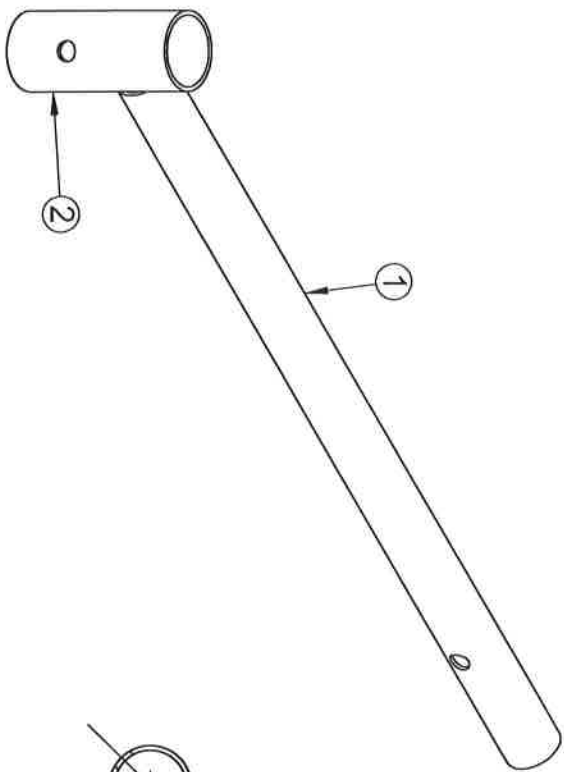
NO	QTY	DESCRIPTION	PART NO.
8	1	BAR-FLT-HR-1/2"x1-1/2"x4-1/4"	0064-2592
7	1	TUBE-RND-01.000" X .083" X 23-1/2"	0065-0072-23
6	1	SADDLE	0064-0009
5	1	BAR-FLT-HR-3/8"x1-1/2"x1-3/4"	0064-1510
4	1	BAR-FLT-HR-5/16" X 1" X 1"	0064-1508
3	1	ANGLE HANGER	0070-279
2	1	TUBE-RND-01.500 X .083 NOTCHED	0065-0435-07
1	1	TUBE-RND-01.500X .083 X 19 1/2"	0065-2696

PRINT APPROVAL
 COMPANY _____
 SIGNATURE _____
 DATE _____

INLINE ADJUSTABLE BRACKET
 FRAME WELDMENT

DR RFO DATE 3-25-13 DWG NO. 0039-199
Haulotte
Biljax ARCHBOLD, OHIO 43907
 CORP. CONTRACTORS

SIZE
B



PRINT APPROVAL

COMPANY _____
 SIGNATURE _____
 DATE _____

REVISION	E.C.O.'S	WEIGHT	2.28 lbs.	MATERIAL SPECIFICATION
0				

REV	DATE	REV	BY	SCALE	1:4

FINISH POWDER YELLOW

UNLESS OTHERWISE SPECIFIED THE FOLLOWING APPLY:

*DIMENSIONS ARE IN INCHES.
 *TOLERANCES ARE AS FOLLOWS

FRACTION	DECIMALS	ANGLES
+/- 1/32"	XX +/- .01	+/- 1/2°
	XXX +/- .005	

This drawing is the property of Biljax, Inc., Archbold, Ohio. This equipment was designed with the understanding that the prints are loaned and will not be reproduced, copied, or used to assist in making further drawing, apparatus or parts thereof, and is to be returned unless otherwise specified.

NO.	QTY.	DESCRIPTION	PART NO.
2	1	SOCKET 1.69"	0065-0561
1	1	TUBE-RND-01.250 X .086 X 19-5/8"	0065-2697

**ARMWELDMENT ADJUSTABLE INLINE
SIDE BRACKET**

DR	RFO	DATE	3-28-13	DWG NO.	0039-200-745
BY					

Haulotte **BILJAX** ARCHBOLD, OHIO 43502
 GROUP COPYRIGTH ©2009

SIZE
A